



# GAT MONTHLY MEMBERSHIP PROGRESS REPORT

Results as of: 6/30/2023

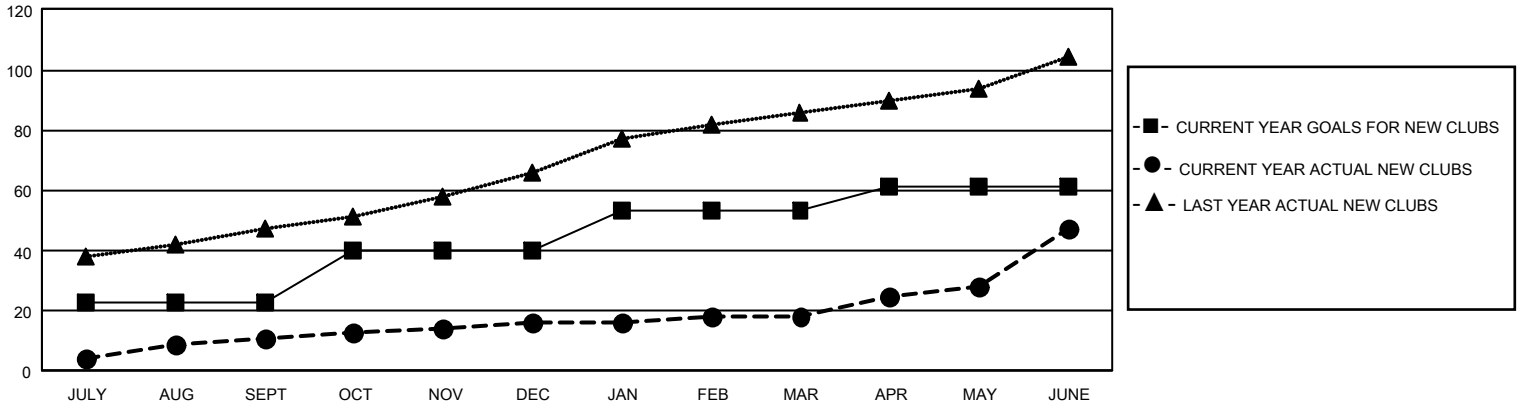
## GMT Constitutional Area 6, Group J

REPORT DOES NOT INCLUDE CLUBS IN UNDISTRICTED AREAS.

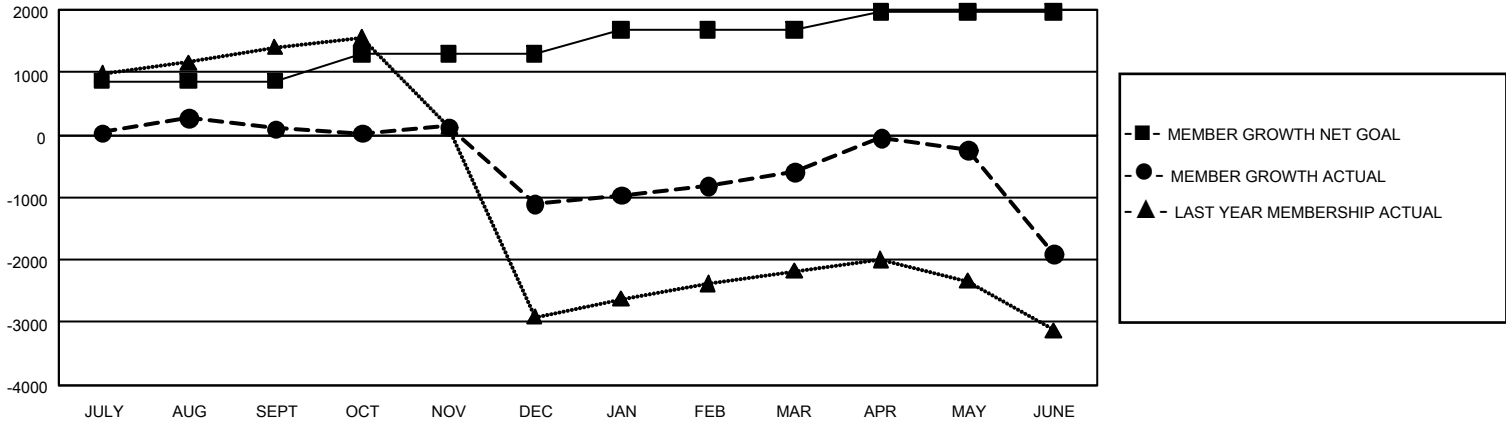
Clubs			
RESULTS FOR 2022-2023			
QUARTER	NEW CLUB GOAL	NEW CLUBS	DROPPED CLUBS
JULY/AUG/SEPT	69	11	103
OCT/NOV/DEC	51	5	21
JAN/FEB/MAR	39	2	37
APR/MAY/JUNE	24	29	34

Members			
RESULTS FOR 2022-2023			
QUARTER	MEMBER GROWTH NET GOAL	MEMBER GROWTH ACTUAL	DROPPED MEMBERS ACTUAL (including transfers)
JULY/AUG/SEPT	860	1,077	872
OCT/NOV/DEC	435	995	2,106
JAN/FEB/MAR	385	1,009	301
APR/MAY/JUNE	285	2,766	3,615

GOALS AND ACTUAL NEW CLUBS CUMULATIVE



GOALS AND ACTUAL MEMBERS CUMULATIVE



DROPPED CLUBS: 195	546 CLUBS OF 972 ADDED 1 OR MORE NEW MEMBERS	<u>GENDER DISTRIBUTION</u>	
<u>DROPPED MEMBERS</u>		MALE	17,144 (62.42%)
DECEASED	99	FEMALE	10,318 (37.57%)
CLUB CANCELLED	978	NON BINARY	0 (0.00%)
OTHER	5,817	PREFER NOT TO ANSWER	4 (0.01%)
TOTAL	6,894	TOTAL FAMILY UNIT MEMBERS	17,610
	<a href="#">CLICK HERE FOR CUMULATIVE MEMBERSHIP DATA</a>	FAMILY MEMBERS PAYING HALF DUES	11,235